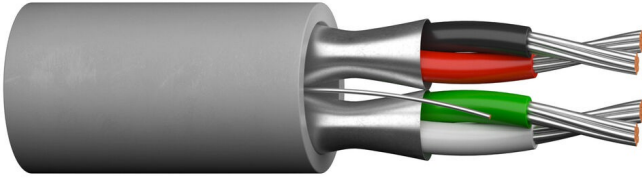


COMM CABLE MULTI-PAIR SHIELDED RISER

UL, CSA, NEC approved wires for two way circuits.



PRODUCT CONSTRUCTION:

Conductor: 22 AWG fully annealed stranded tinned copper per ASTM B33 • Twisted pairs

Insulation: Premium-grade, color-coded polypropylene

Shield: Individually shielded pairs • 100% Flexfoil® aluminum/polyester, 25% overlap, foil facing out • Stranded tinned copper drain wire

Jacket: PVC, gray • Temperature range: -20 °C to +80 °C

Applications: Where total isolation of signal is required • Computers • Control circuits • Industrial equipment • Suggested voltage rating: 300 volts

Compliances: NEC Article 800 Type CM (UL: 75 °C, 300 V) • UL Style 2717 (UL: 80 °C) • UL Style 2835 (UL: 60 °C, 30 V) • UL Style 2464 (UL: 80 °C, 300 V) • RoHS Compliant Directive 2015/863/EU (RoHS-3) • Passes CSA CMH or CMG Flame Test

Packaging: Please contact Customer Service for packaging and color options

Nominal Outer Diameter : 4.45 x 7.11 mm. & 0.175 x 0.28 in.

APPLICATION PROPERTIES

Flame retardant	Yes	Resistant to UV	No
Halogen free	No	Outdoor installation	No
Low smoke	No	Underground installation	No
Oil resistant	No		

STANDARDS AND APPROVALS



We reserve the right to do changes as a result of running product development and/or changes in standards

ELECTRICAL PROPERTIES

Catalog Number	No. Of. Cond	AWG / Kcmil	Conductor category	Conductor strand count	Insulation thickness [in]	Insulation thickness [mm]	Jacket thickness [in]	Jacket thickness [mm]	Nominal overall o.d.	Nominal outer diameter [mm]
C7106A	2	20	Class 2 = stranded	7/28	0.01	0.25	0.041	1.04	0.305	7.75
C1350A	4	22	Class 2 = stranded	7/30	0.01	0.25	0.04	0.89	0.05	31.64
C1353A	4	22	Class 2 = stranded	7/30	0.01	0.25	0.028	0.71	0.208	5.28
C1352A	4	22	Class 2 = stranded	7/30	0.007	0.18	0.02	0.51	0.16	4.06
C1670A	4	22	Class 1 = solid	Solid	0.01	0.25	0.032	0.81	0.218	5.54

We reserve the right to do changes as a result of running product development and/or changes in standards